



ew 300-500 G4

EM 300-500 G4
SKM 300 G4-S
SKM 500 G4
SK 300 G4-RC
SK 500 G4

Quick Guide	Kort vejledning
Kurzanleitung	Pikaohje
Guide rapide	Γρήγορος οδηγός
Guía rápida	Kısa Kılavuz
Guía de inicio rápido	Краткая инструкция
Guia rápido	快速指南
Beknopte handleiding	快速使用指南
Krótká instrukcja obsługi	クイックガイド
Snabbguide	퀵 가이드

SENNHEISER



www.sennheiser.com/download

Sennheiser electronic GmbH & Co. KG

Am Labor 1, 30900 Wedemark, Germany
www.sennheiser.com

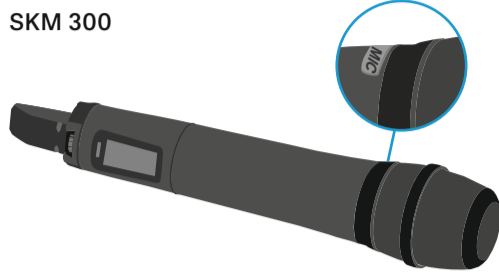
Printed in Germany, Publ. 01/24, 575861/A03

EM 300-500

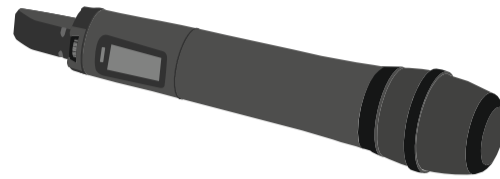


SKM 300 | SKM 500

SKM 300



SKM 500



SK 300 | SK 500

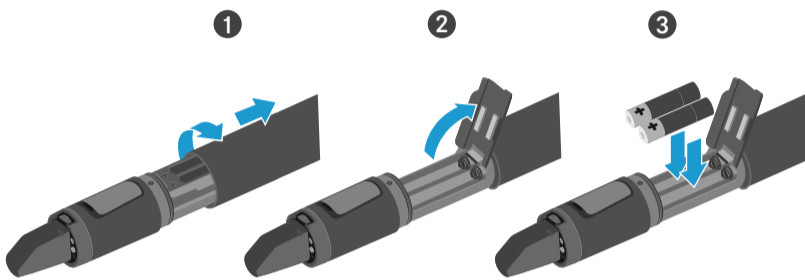
SK 300



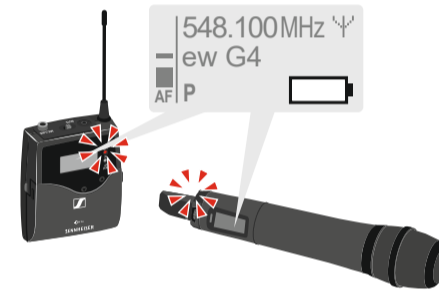
SK 500



Battery



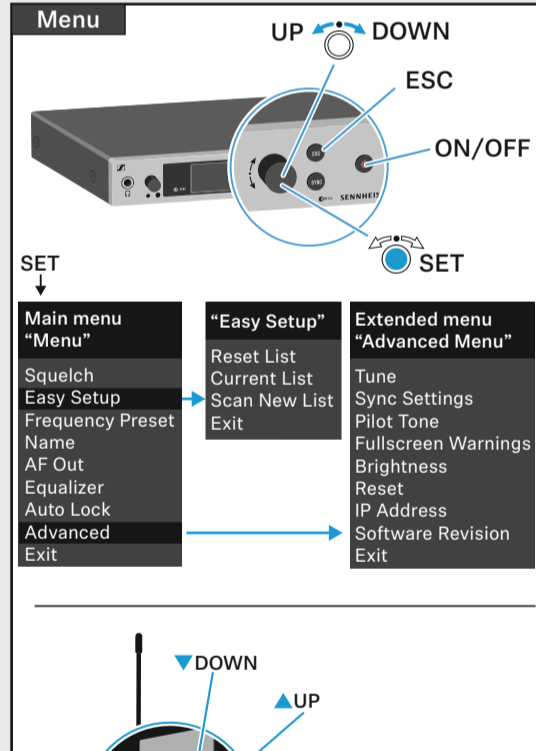
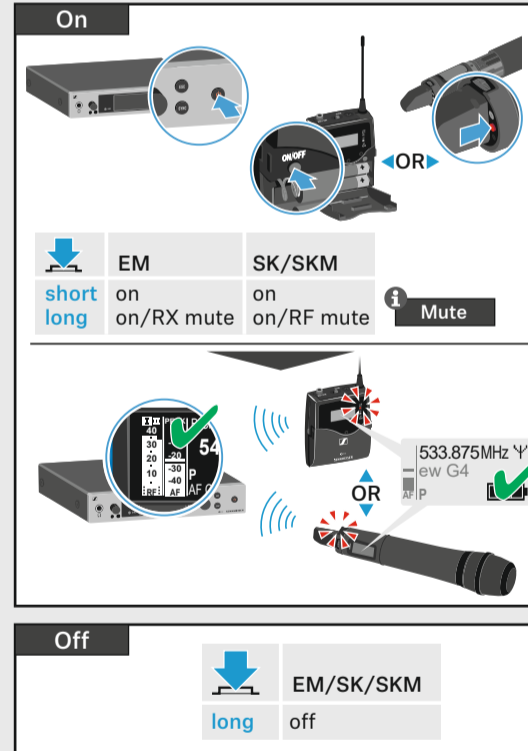
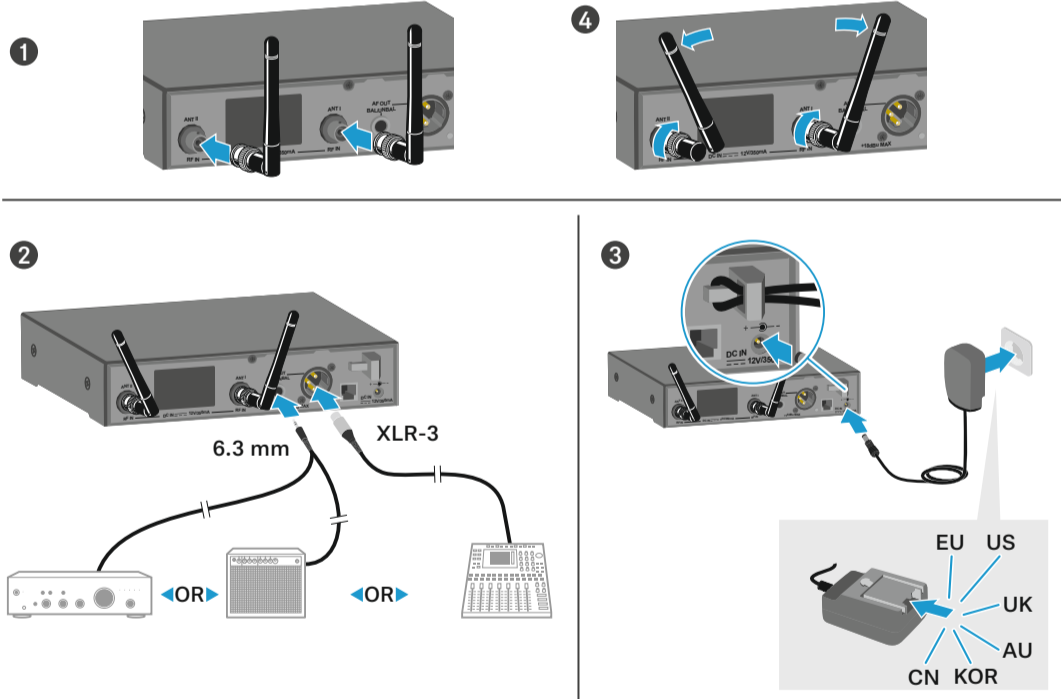
Low Battery



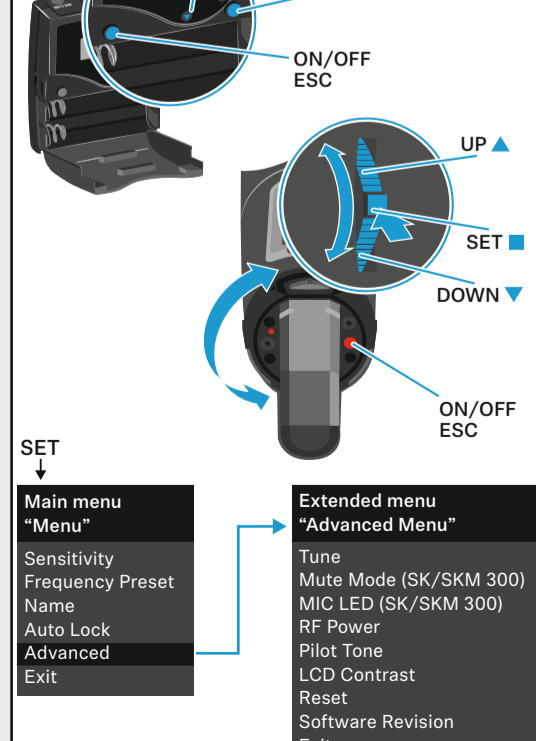
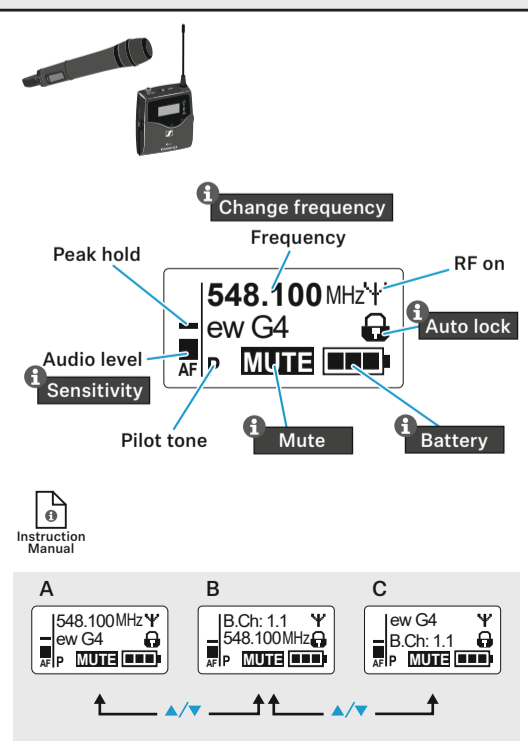
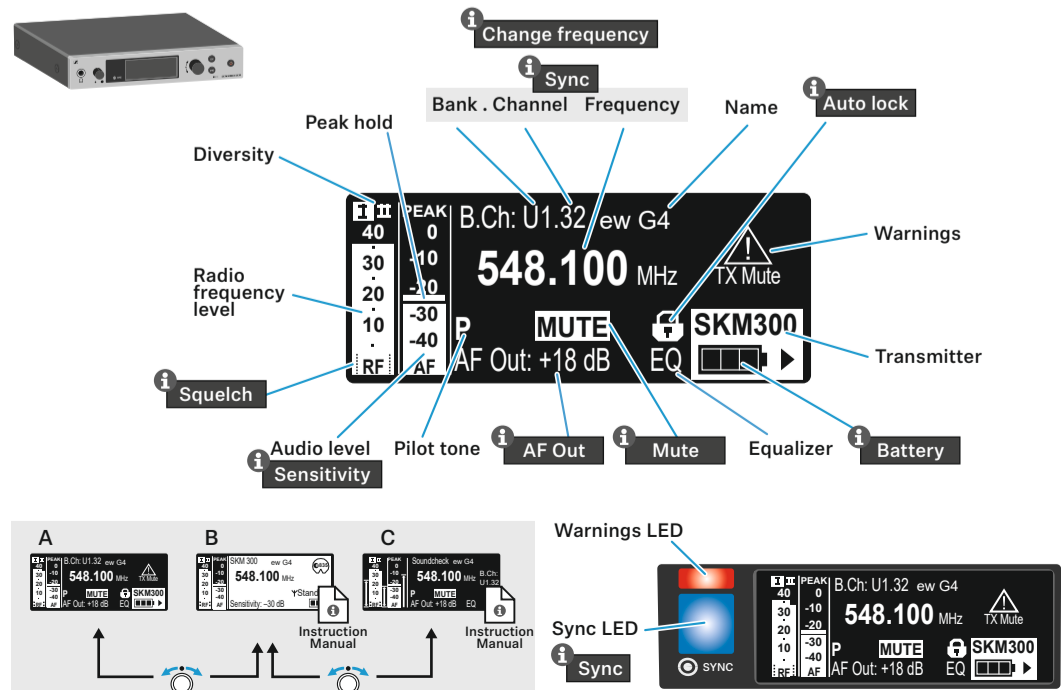
	100 %	> 8 h
	70 %	4 - 6 h
	30 %	2 - 3 h

LOW BATT

Setup



Standard display



Auto lock

EM

1. Press **SET**
2. Turn knob to **Locked** or **Unlock?**
3. Press **SET**

SK

1. Press **SET**
2. Turn knob to **Locked** or **Unlock?**
3. Press **SET**

SKM

1. Press **SET**
2. Turn knob to **Locked** or **Unlock?**
3. Press **SET**

Auto lock 10 s

Instruction Manual

Mute

Instruction Manual

SK 300

SKM 300 SKM 500

RF Mute On? (Microphone icon with slash)

RF Mute Off? (Microphone icon)

AF Mute Mute On (Microphone icon with slash)

AF Mute Mute Off (Microphone icon)

Menu Advanced SET

Advanced Mute Mode AF On/Off SET

Mute Mode AF On/Off SET

Mute Mode RF On/Off SET

Mute Mode Push to Talk SET

Mute Mode Push to Mute SET

RMS 1 short

MIC

New frequency

Squelch

1. Set squelch level to 25 dB or 5 dB

RF

Change frequency

2. SKM/SK off!
3. Easy Setup EM

Easy Setup EM	Frequency Preset EM, SK, SKM
Menu Squelch Easy Setup Frequency Preset SET	Menu Frequency Preset B.Ch. 1.1 SET
Easy Setup Current List Scan New List Exit SET	Frequency Preset B.Ch. 2.6 558.025 MHz SET
Scan New List 1...20 WAIT 30 s 518...558 MHz	Frequency Preset B.Ch. 2.1 558.025 MHz SET
Easy Setup Bank U6 Bank 1 Bank 2 Free: 24 SET	Stored
Easy Setup B.Ch. 2.1 ew300 G3 Sync 558.025MHz SET	
Stored	

No frequency → 1 Squelch: Middle ...

Instruction Manual

Sync

4. Sync process

≤ 10 cm ≤ 4"

OR

SYNC

OR

× SYNC

Instruction Manual

EM 300-500

RX Mute On? (Microphone icon with slash)

RX Mute Off? (Microphone icon)

short

Network Control

WSM Sennheiser Control Cockpit Media Control

Multichannel - Easy Setup

Bank 1...20; U1...U6

Channel 1...32

max. 32 channels

RJ 45

Instruction Manual

Sensitivity

Menu Sensitivity -24 dB

-60 dB ... 0 dB

-48 dB ... 0 dB

AF PEAK

AF out

Menu AF Out +18 dB

-24 dB ... +24 dB

LEVEL

SKM

ME 2 | MKE 2

ME 2

25 cm (10")

MKE 2

SL Headmic 1

2...3 cm (1")

ME 2 | MKE 2

ME 2

25 cm (10")

MKE 2

SL Headmic 1

2...3 cm (1")